



THE SCUTTLEBUTT

The Scuttlebutt is the official newsletter of the Rocky Mountain Shipwrights. Its objective is to promote, develop and further scale model shipbuilding, as well as study maritime subjects, including art, history and traditions.

September 2024

Picnics are a great way to ketchup with friends

Meeting Information

Shipwrights meet the THIRD Saturday of the month at Rockler Woodworking and Hardware, 2553 S. Colorado Blvd. Denver. The store opens at 9:00 am and the meeting starts at 9:30.

Next Meeting: Sept. 21, 2024

Ralph Buckwalter will continue the rigging series with part 2 of our discussion on Running Rigging.

Arvada Workshop

The workshop is on the FIRST Saturday of every month beginning at 9:00 am at the Arvada City Hall, Police entrance. The address: 8101 Ralston Road.

Next workshop: Oct. 5, 2024

Officers

Commodore..... Bob Fivehouse
Skipper..... Martin Jelsema
First Mate..... Scott Shilling
Purser..... Scott Shilling
Clerk..... Jay McKeown

Committees

Events Chair: Erik Collett
Photographer: Jay Phillips
Historian: Roger Hanson
Scuttlebutt: Hugh Long
Webmaster: Rob Cuscaden
Workshop Chair: Ralph Buckwalter

Website

<http://rockymountainshipwrights.org>

Meet Up Group

<https://www.meetup.com/rocky-mountain-shipwrights/>

Cargo Hold

Skipper's Log.....	2
Picnic – August 21, 2024	2
Get Your Gear	4
MeetUp.com	4
Workshop – Sept. 7, 2024.....	4
Upcoming Birthdays	7
Looking Ahead to the October Exhibit.....	7
How to Register Your Models	8
Russell Holmes Models on Display	9
Shipwrecks.....	11
H.L. Hunley & Bismarck by Jay Phillips	11
CSS Alabama & SMS <i>Dresden</i> by Martin Jelsema.....	12
USS Kearsarge by Phil von der Heydt	12
USS Monitor by Ralph Buckwalter	13

Bluenose by Hugh Long.....	13
Battleship USS Colorado – In Colorado!.....	13
It's almost Mexico Season.....	14
Sources of Tools, Supplies & Services.....	15
Online Suppliers	15
Local Sources	16
Selected Informational Resources for Model Builders.....	17

Skipper's Log

Hello, shipwrights:

Our fourth quarter meetings will be very active for us:

- October – Rockler ship model exhibit – Oct. 18, 19, & 20
- November – Annual auction – Nov. 16
- December – Christmas party Dec. 21

First, about the [exhibit](#):

- A copy of the Event Guidelines has been attached to the email for this Scuttlebutt and can also be found on our website - [Event Guidelines](#).
- This is an appeal for participation, starting with someone volunteering to oversee this event. Please let me know if you can do this, or handle any of the activities listed here:
- Encourage members to submit models
- Establish a watch list and encourage participation (I will supply a form)
- Encourage members to distribute flyers. (I will create flyers for the September meeting)
- Create news release and distribute to media channels via emails (I will supply some contacts)
- Attempt to get TV channels and newspapers to cover the show
- Fill out local Internet directory forms

You might start thinking of what tools, kits, supplies you don't need and would like to auction off at the November meeting. The auction is a good place to find Christmas gifts as well.

I hope to see you at the meeting on September 21 where Ralph Buckwalter will give part two of our presentation on running rigging.

Martin Jelsema, Skipper

Picnic – August 21, 2024

The Rocky Mountain Shipwrights' picnic was a great success with at least 21 people (including at least 5 family members) attending. The weather was perfect for a picnic and the park had a great combination of sun and shade along with a good number of tables.

I'm sorry the August Scuttlebutt (which was one of the "last" reminders of the picnic) didn't make it out to everyone prior to the picnic. When I sent it out the first time, I didn't receive a copy (I include myself on the distribution so I can tell if it was sent), I figured there was a problem, but I waited a day.

When I sent it out the second time, even though I didn't get it, I got one "non-delivered" or "mailer-daemon" email (which usually indicates a "bad" email address), so I felt it may have gone out, but wasn't sure since still I didn't get it. Upon searching, I found it ended up in my junk folder. So even though I wasn't happy with what happened, I assumed it went out.

Then at the picnic I started asking people, and no one seemed to have gotten it.

When I got home after the picnic, I sent it out a third time, but this time breaking it up into batches of about 15 people per batch. If you look back at your email, it will have an "- a", "- b", "- c", or "- d" at the end subject line indicating the four different "batches" I sent out. And voila, it finally made it out. Seems like we've hit the magic number of members or file size or combination of these, or whatever, but the issue did not get sent out in the first two attempts to send it.



So I apologize again, especially to the people who may have made it to the picnic if they had received one more reminder.

For everyone that made it out, I hope you had as much fun as I had, and hope the club does it again.

The picnic was attended by Ralph, Martha (Ralph's wife), Erik, Camille (Erik's daughter), Jim, Rob, Brian, Doug, Martin J, John, Hugh, Mark, Jay, Carrol (Jay's wife), Alice, Scott, Beth (Scott's wife), Chuck, Martin T, Debbie (Martin T's wife), and Phil



Get Your Gear

- For polo shirts and vests, ask Steve Lofshult at the next meeting.
- For caps, ask John Lamb at the next meeting (they are back in stock).
- For name badges, ask Rob Cuscaden at the next meeting.



MeetUp.com

- The Rocky Mountain Shipwrights have been on Meet Up.com for approximately 6 months, and during that time the meetup group has accumulated fifteen members, but only one of them have become a club member.
- Given the improvements to the club's [website](#) and the rising cost of using meetup, we've decided to "disband" the meetup group. This will not affect the actual club membership. We tried, but not many people found us.

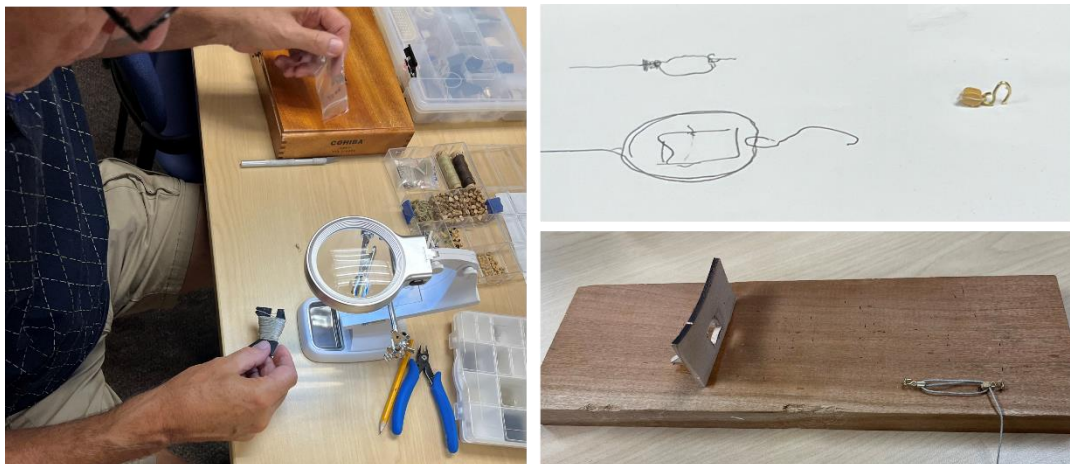
Workshop – Sept. 7, 2024

There were twelve members in attendance at the workshop. Attendees: Jim Brooks, Ralph Buckwalter, Brian Davies, Bob Fivehouse, Martin Jelsma, Charlie Krinsky, Steve Lofshult, Hugh Long, Del Milne, Jay Phillips Carol, Scott Schilling, and Alice Simpson.

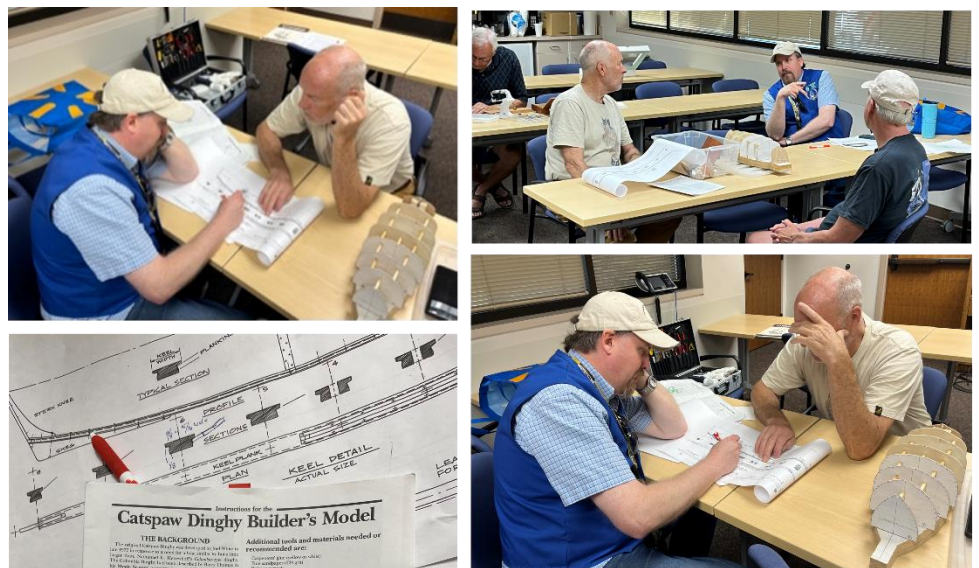


Alice, Bob, Brian, Charlie, Del, Hugh, Jay (& Carol), Jim, Martin, Ralph, Scott, and Steve

(&

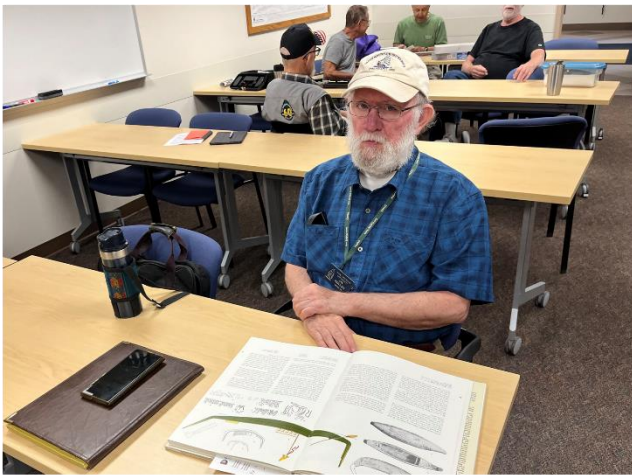


Scott – Working on the cannon breech ropes for his San Felipe... 11 cannons along each side for a total of 22 cannons, each cannon needs 2 breech ropes – so Scott needs to make 44 of these

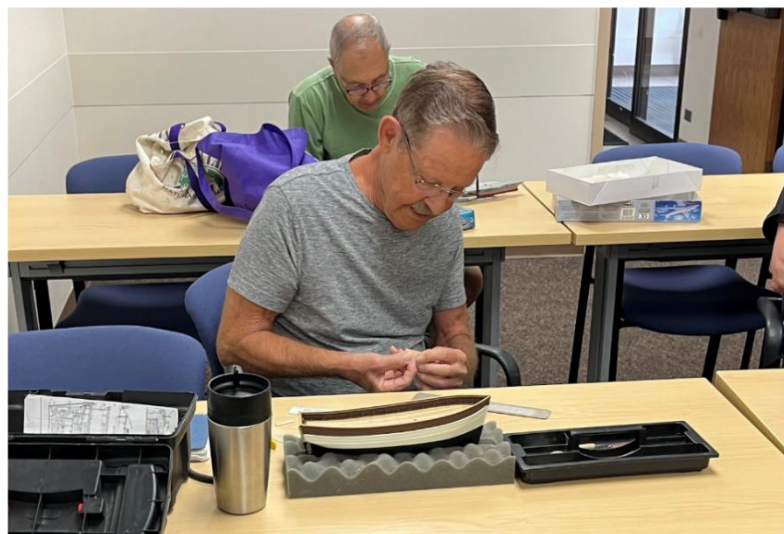
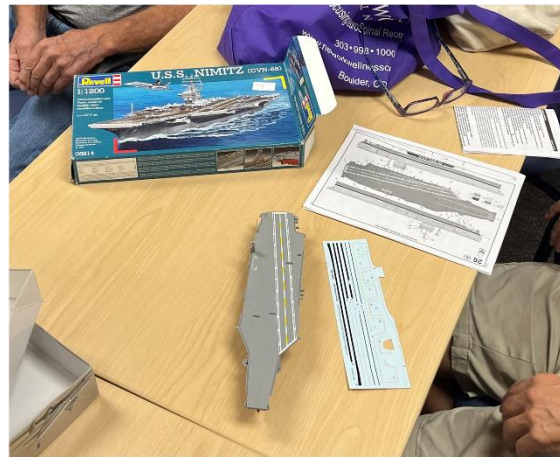


Brian, Jim, and Steve – Figuring out how to create the keel for Jim's Catspaw Dinghy

Jay – Researching his next build



Ralph and Charlie – Discussing the decals on Charlie's U.S.S. Nimitz



Bob and Ralph – Discussing Ralph's Gjoa , plus a look at the lifeboats for Bob's newest project, the S.S. Insulinde



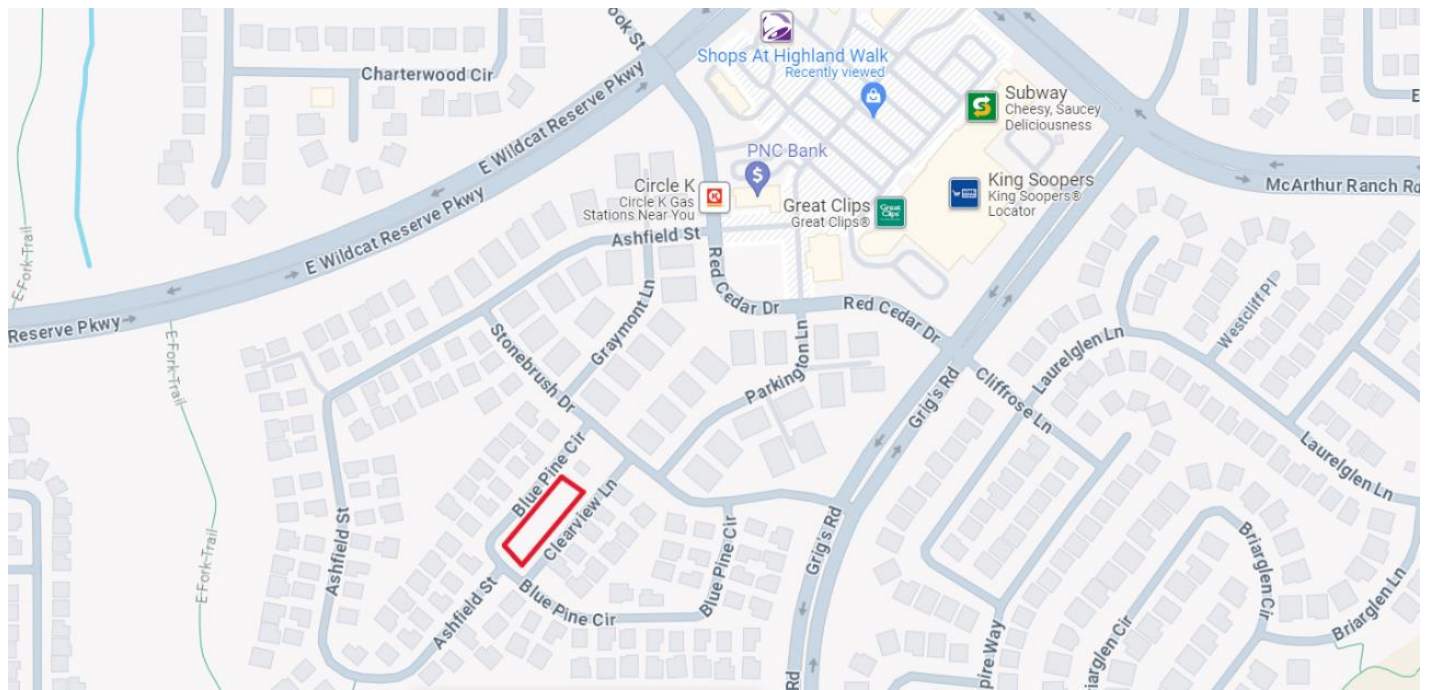
Upcoming Birthdays

We have two BIG birthday celebrations coming up that I hope everyone can attend.

Giuseppe (Joe) Presta is turning 100. We will have some special snacks at our meeting on September 21st. I hope you can attend the meeting to congratulate Joe in person.

Erik Collett is turning 90 and he'd love to have you join him to celebrate. As he says, at 90 you can have dessert before dinner so join Erik on Sunday September 22nd from 3:30 to 5:30 pm in the Highland Walk Park. To get to the park, from Wildcat Reserve turn south on Red Cedar and almost immediately west on Ashfield. Follow Ashfield around until it dead-ends at Blue Pine Circle. The park is shown below by the red rectangle. We'll enjoy only dessert – no dinner since he wants to keep it simple. Please no gifts. Everyone is welcome!!!

Please RSVP at ErikCollett@yahoo.com.



Looking Ahead to the October Exhibit

The October Exhibit is right around the corner as it is scheduled for October 18-20. In addition to looking for models, we are also looking for someone to volunteer to manage the show.

To aid members in holding successful exhibits and displays, Erik Collett and Martin Jelsma created a document to help with the preparation and coordination of managing an exhibit. This document walks members through the process from proposing a venue and date to cleanup and celebration. A copy of the document has been attached to the email for this Scuttlebutt and can be found on our website - [Event Guidelines](#).

If you are not up for managing the exhibit, hopefully you can help whoever does step up as a number of volunteers will be needed. We will set up the show on Thursday afternoon and early Friday morning and shut down around 3 pm on Sunday.

You can volunteer to manage the show by replying to the Scuttlebutt email, or if no one has volunteered by the September meeting, you can volunteer at the meeting.

The exhibit will require three 2-plus hour shifts on Friday and Saturday, while Sunday only has two shifts. It is okay to sign up for multiple shifts. So please attend the September 21st meeting or the October 5th workshop and sign up.

How to Register Your Models

1. Go to our <https://rockymountainshipwrights.org/>.



2. Click on “Rockler Show Model Entry Form”
3. Fill out the form. Note: If the model was displayed at one of the last Rockler exhibits, you only need to fill in the model’s name and your name.
4. Click the “Submit Form” button.
5. Note: You will NOT get an acknowledgment notice even though your form has been recorded.

You may enter more than one model – in fact, the more the merrier. Also, “Under Construction” models are encouraged because attendees find them interesting and informative.

Name of Model: *	<input type="text"/>
Modeler's Name: *	<input type="text"/>
Period Ship Sailed:	<input type="text"/>
Type of model:	<input type="text"/>
Build Time:	<input type="text"/>
Scale:	<input type="text"/>
Description of Build:	<input type="text"/>
Ship's History:	<input type="text"/>
Modeler's Bio:	<input type="text"/>
<input type="button" value="Submit Form"/>	

Russell Holmes Models on Display

By Bruce Bollenbach, Eads, Tennessee

Russell Holmes was a long-time member of the Rocky Mountain Shipwrights back in the early days of the club when they met at Hobby Giant and the Castlewood Public Library. He was a prolific modeler and unafraid to tackle large, complicated projects back when there was little source information other than the instructions to go by. He and Fred Tournier would often get together and discuss ways of doing things, which was always fun to listen to and learn from.

After Russell's passing, we had often wondered what became of his basement full of ship models. Years later I was happy to find out that they were still intact, and the family had given them to the Rocky Mountain Shipwrights.

Most models that are not in a display case seldom last more than a few years after the maker's passing. They collect dust and then a well-meaning duster breaks them. Or they are seen as a cumbersome "white elephant" item and are eventually given to children to play with. I was happy that Alice Simpson let me have a few of Russ's models to remember him by.

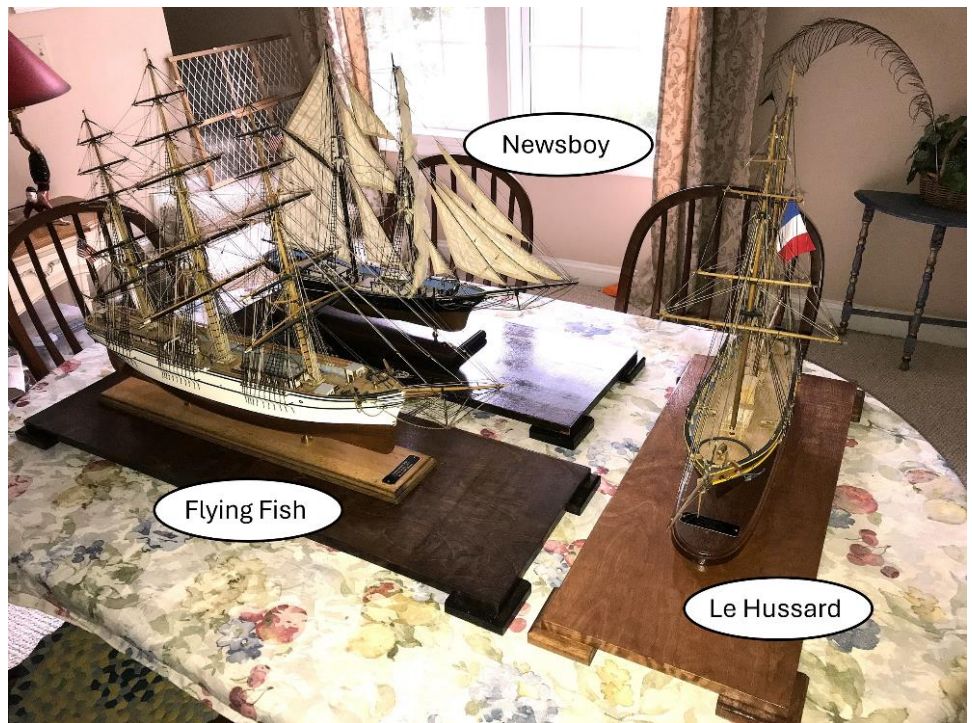
After making the trip east to Tennessee there was some repair work on each of them that needed to be done. Some lines had come adrift, some spars had snapped, and of course they were dusty. None of them were mounted to a display base of any kind.

So, the first order of business was to dust and clean the models. I used compressed air and a lot of Q-tips. I went line by line with a soft bristle artist brush and the models came back to life. Next, I cut and stained some poplar to make a display base, routed the edges, polyurethaned the finish, and mounted felt pads. I had a brass nameplate engraved stating the ship's name, type of vessel, and "modeled by R. Holmes" so someone would know who built it years from now. The model was then able to sit in my living room for a couple of years.

I had been asking around various places to see if anyone would be interested in a collection of ship models. I happened to stop in the Somerville-Fayette County Library (in Somerville Tennessee) one day as I was in town getting license plates. I spoke with the Library Director, Ms. Sissy Dowdle-Rosser, about Russ's models and she said they would be delighted to accept a donation of his ship models. I told her I would make cases for them and then get back to her.

I made some simple display cases for three of the models, Flying Fish, Newsboy, and Le Hussard. The wood base was cut out of $\frac{3}{4}$ " birch plywood and edge banded with birch veneer. This was mounted on four poplar feet with routed edges that protruded from the end and sides of the base by about $\frac{1}{2}$ " for supporting an acrylic case. All of the wood was stained with Minwax Red Mahogany and then coated with Gloss Polyurethane. I cut some black felt for the bottom of the pads and screwed the Display base to the case.

This was a simple case to make. You may want to protect your models by making a case to keep the dust and grandkids off of them. I do not know about you, but I do not have the energy anymore to repair a model that I have repaired 3-4 times already, let alone dust it every year.



I delivered the models to the library, and they are displayed where people can see them. I also did a write-up for each one that can go next to it explaining the ship and its history. Sissy sends her thanks and appreciation.



Something for y'all to consider.... When a Rocky Mountain Shipwright passes away, perhaps the club could build a case for one of their ships and donate it to a worthy institution? Or in my case you could buy pizza and hire a band! Hope you all are doing well and enjoying the hobby of model ship building.

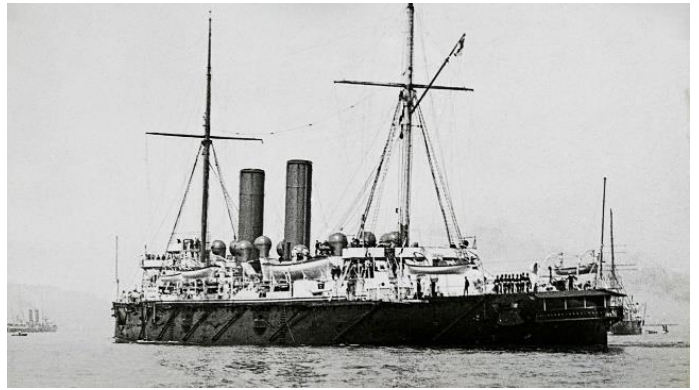
Shipwrecks

At the picnic Alice Sampson sent me an article she had recently read about the discovery of the wreck of the HMS Hawke, a torpedoed World War I warship found in "amazing" condition after it was torpedoed by a German U-boat and sank on October 15, 1914, off the coast of Scotland. It's an interesting read plus I found two videos about the HMS Hawke as well.

[Battleship HMS Hawke](#)

[Hawke Video 1](#)

[Hawke Video 2](#)



And today, just as this issue was getting ready to be sent out, I heard that the wreck of Le Lyonnais, a sail-and-steam passenger ship that sank in 1856 with the loss of 114 lives, was discovered some 200 miles off the coast of Nantucket, Massachusetts, by a team from Atlantic Wreck Salvage (AWS).

[Le Lyonnais History](#)

[Le Lyonnais History 2](#)

But reading and watching the video made me start thinking about other wrecks, and then got me thinking about how many of our members have made a model of a ship that sank, and more to the point, had sunk and then been found. Here's a brief listing of what I found. I'm sure it is only a partial list, so please let me know if you've made a model of a ship whose wreck has been discovered.

H.L. Hunley & Bismarck by Jay Phillips

[H.L. Hunley](#) [Hunley Discovery](#)

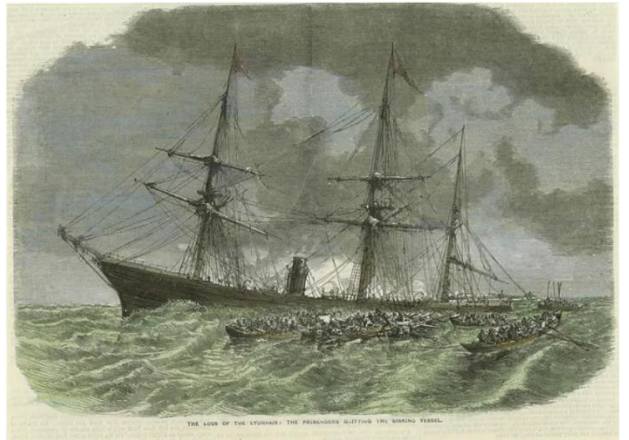
[H.L. Hunley Wreck site Information](#)

The Hunley was finally located in 1995, and was raised in 2000. It is on display in North Charleston, South Carolina, at the Warren Lasch Conservation Center on the Cooper River.

[Bismarck History](#) [Bismarck Wreck](#)

[Bismarck Wreck site Info](#)

The wreck of the Bismarck was located in June 1989 by Robert Ballard and has since been further surveyed by several other expeditions.

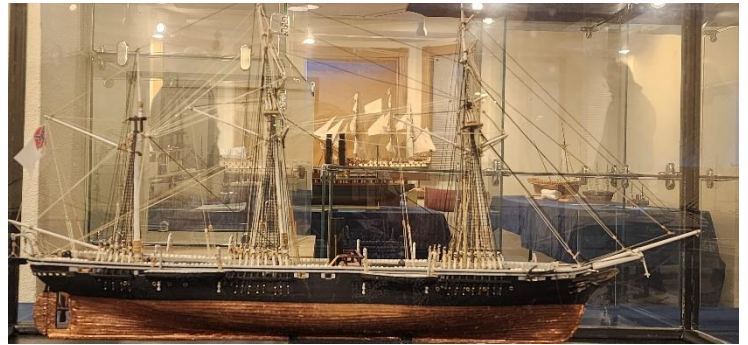


CSS Alabama & SMS *Dresden* by Martin Jelsema

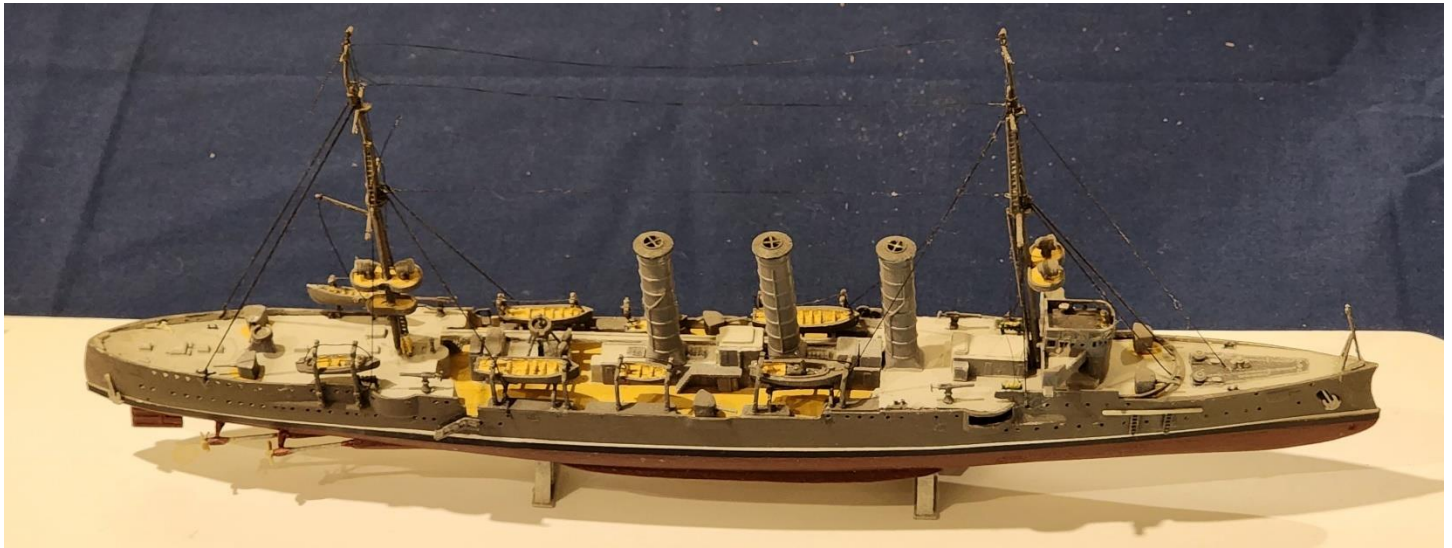
[CSS Alabama history](#) [CSS Alabama Wreck](#)

[Alabama Video 1](#) [Alabama Video 2](#)

The wreck of the Alabama was discovered in 1984 seven miles out from Cherbourg by the French minesweeper Circe.



[SMS Dresden history](#) [Dresden Video](#)



The wreck of the Dresden lies at a depth of 70 meters (230 ft). In 2002, the first survey of the wreck was done by a team led by James P. Delgado for the Sea Hunters documentary produced by the National Underwater and Marine Agency.

USS Kersarge by Phil von der Heydt

[USS Kersarge history](#) [USS Kearsarge wreck](#)

[Kersarge Video 1](#) [Kersarge Video 2](#)

The Kersarge departed Haiti on 20 January 1894 for Bluefields, Nicaragua, but she wrecked on a reef off Roncador Cay on 2 February. Her officers and crew made it safely ashore.



USS Monitor by Ralph Buckwalter

[Monitor history and videos](#)

In 1973, a team of scientists aboard Duke University Research Vessel Eastward located the shipwreck remains of what they believed to be the USS Monitor lying upside down in 230 feet of water, approximately 16 miles off Cape Hatteras, N.C. A 1974 expedition confirmed that the shipwreck was in fact the Monitor.



Bluenose by Hugh Long

[Bluenose history](#)

[Bluenose video 1](#)

[Bluenose video 2](#)

Laden with bananas, the Bluenose struck a coral reef off Île à Vache, Haiti, on 28 January 1946. Wrecked beyond repair, with no loss of life, the schooner was abandoned on the reef. The vessel broke apart on the reef.

Various divers and film makers have claimed to have found the wreck of Bluenose, most recently in June 2005 by divers from the Caribbean Marine Institute searching for Henry Morgan's ship HMS Oxford. However, the large number of wrecks on the reef at Île à Vache and the scattered condition of the wreckage has made identification difficult.



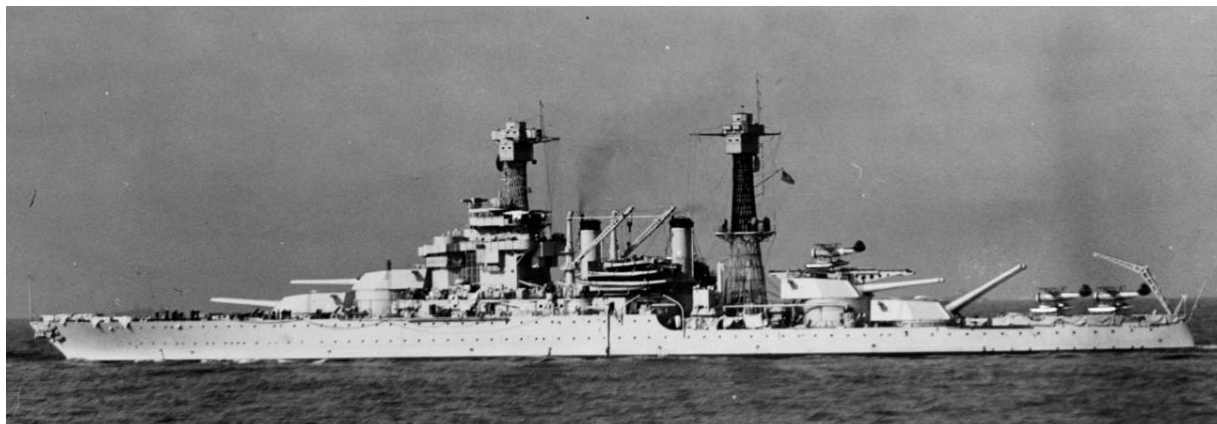
Battleship USS Colorado – In Colorado!

A replica of the battleship USS Colorado (BB-45) has been built on the banks of Mann-Nyholt Lake in Brighton, Colorado. The replica is part of the new Adams County Veterans Memorial which the Navy will use as a recruitment tool and a venue for ceremonies.



The USS Colorado has a storied history. From Wikipedia, the USS Colorado (BB-45) was a battleship of the United States Navy that was in service from 1923 to 1947. She was the lead ship of the Colorado class of battleships. Her keel was laid down on 29 May 1919, by the New York Shipbuilding Corporation. She was launched on 22 March

1921, and commissioned on 30 August 1923. She was armed with eight 16-inch (406 mm) guns and fourteen 5-inch (127 mm) deck guns; two 5-inch guns were removed in an overhaul.



During World War II, in May 1942, soon after USA's entry into the war, Colorado undertook a defensive patrol near the Golden Gate Bridge to stop a possible Japanese invasion. She then sailed to Fiji, to stop any further Japanese advance into the Pacific. Next, she supported the landings on Tarawa, the Marshall Islands, Saipan, Guam, and Tinian. On 24 July 1944, during the shelling of Tinian, Colorado received 22 shell hits from shore batteries, but continued to support the invading troops until 3 August. She later arrived in Leyte Gulf on 20 November 1944, to support American troops fighting ashore. On 27 November, she was hit by two kamikazes which caused moderate damage.



After that, Colorado sailed to Luzon on 1 January 1945, where she participated in the preinvasion bombardments in Lingayen Gulf. She returned to Okinawa on 6 August and sailed from there to Japan for the occupation of the country, arriving in Tokyo on 27 August. Departing Tokyo Bay on 20 September, she arrived at San Francisco on 15 October. She was placed out of commission in reserve in Pearl Harbor on 7 January 1947, and sold for scrapping on 23 July 1959. She won seven battle stars during her service. Many of Colorado's anti-aircraft guns are in museums across the state of Colorado (her bell and teak decking are also in museums and the USO in the Seattle-Tacoma airport) or mounted on the museum ship Olympia.

So how many of our club members have visited the replica? And possibly more important, who would like to go on a field trip with me? Let me know and we'll set something up as I want to go.

It's almost Mexico Season

If you read the Scuttlebutt, you know I travel to Mexico quite a bit, and that "bit" is right around the corner. I'll still be writing the Scuttlebutt, but I'll be relying on info I get from a couple of people. This year I'm looking for a couple of additional people to become my field reporters. I'll attend every meeting and workshop when I'm in town, but I know I'll be missing a large number of them.

If you are interested in helping out, even for only a specific meeting or workshop (or two), please let me know and we'll coordinate our calendars.

I'm looking for someone who can jot a few notes down on the show n' tells and presentations at the meetings and at the workshops I'm looking for "what" everyone is working on. We have a great photographer in Jay, so you won't need to take pictures. Simple notes and names and I'll do the rest.

Sources of Tools, Supplies & Services

Rocky Mountain Shipwrights is not affiliated with any of the companies in the lists below (other than the fact that we meet on the 3rd Saturday of each month at Rockler).

The first list is of selected on-line suppliers. The second list is of local suppliers of goods and services that could be of value to ship modelers. And the third list is of additional resources. **These lists can be thought of as incomplete.** If you use or have discovered others, please email them to hlong222@comcast.net and they will be added to the lists. With your contributions, we can make these lists a more comprehensive and valuable resource.

Online Suppliers

Nautical Hobby Shops

[Ages of Sail](#)

Kits, parts, plans, supplies, and tools.

[Blue Jacket Shipcrafters](#)

Kits, parts, plans, supplies, and tools.

[Cast Your Anchor](#)

Kits, supplies, and tools; based in Canada so shipping is a little longer.

[Model Expo](#)

Nautical hobby shop, extensive ship kits, parts, tools, and supplies

[Modelers Central](#)

Kits, supplies, plans, and tools

[Seaworthy Small Ships](#)

Kits are geared towards new and younger modelers.

[Syren Ship Model Fittings and Supplies](#)

Ship model kits, parts, and scale fittings.

[Wooden Model Ship Kit](#)

Ship model kits, parts, and scale fittings.

Tools

[Byrnes Model Machines](#)

Top of the Line micro saws, sanders, etc.

[Contenti Jewelry Supply](#)

Jewelry tools, fair prices on hand tools, cheap and quality versions of most tools.

[MicroMark](#)

Small tool specialist; lots of tools, some ship kits, and ship modelling supplies.

[UMM-USA](#)

Modeling tools for plastic and wood models

[Razor Blade Company](#)

Many types of cutting blades and handles

Materials

[Cards of Wood](#)

Thin veneer and plywood

[Constantines's Wood Center](#)

Wood veneers plus Rockler-like tools and supplies.

[National Balsa](#)

Wood supplier, airplane centric but good stock of dimensional strips, sheets, and substantial number of blocks in many types of wood, does have a \$50 minimum order.

[Northeastern Scale Lumber](#)

Wood and fabricated wood for models, doll houses and railroad layouts

[Saunders Midwest Products](#)

Balsa, basswood and more – strips, sheets, and dowels. Also, beginner boat kits

Parts

[Flags of the World](#)

Info about all types of flags but not a source of nautical modeling flags

[I.T. Sitek Props](#)

Scale model ships propellers.

Graphics

[Shapeways](#)

3d printing company, many parts for units ranging from complete ships to figureheads. Also does custom work.

Local Sources

[ABC Imaging](#)

77 Klamath St. Denver
303-573-5757
Large & small format copying, B&W printing

[Art Parts Creative Resource Center](#)

3080 Valmont Road, Boulder
720-379-5328
Contributed used arts stuff you get for cheap, from chalk to sewing machines, and more.

[Austin Hardwoods of Denver](#)

975 W Mississippi Ave, Denver
303-733-1292

Colpar/Hobbytown – two locations

[Aurora Location](#)

1915 S Havana St, Aurora, CO
303-341-0414

[Lakewood Location](#)

3355 S Wadsworth Blvd, Lakewood, CO
303-988-5157
Good local hobby shops, some wood ship kits, lots of supplies and tools.

[Guirys](#)

Multiple locations
303-412-6522
Art supplies and house paints

[Hobby Lobby](#)

Multiple locations
Arts and craft supplies

[Laird Plastics](#)

10004 E 45th Ave, Denver, CO
866-292-9090
For plastic case covers ask for Tom

[Meininger Art Supply](#)

499 Broadway, Denver
303-698-3838
Paints, brushes, tools, papers and more

[Michael's](#)

Multiple locations
Arts and crafts supplies

[Plasticare](#)

4211 S Natches Ct Suite K, Englewood, CO
303-781-1171
Plastic supplier/resin with customer shop. can do acrylic fabrication & laser engraving.

[Reynolds Advanced Materials](#)

3920 Grape Street, Denver
303-399-0202
Clays, resins, silicone, and lots more

[Rocky Mountain Train Supply](#)

6060A W 55th Ave, Arvada, CO
303-456-6702
Only train shop in Denver, broad selection of supplies, strip wood, details, scenic supplies.

[Rockler Woodworking and Hardware](#)

2553 S Colorado Blvd, Denver, CO
303-782-0588
Home base for wood, tools, and supplies

[Thinker Tinker Workshop](#)

3735 Ames St. Wheat Ridge, CO 80212
303-748-9180
A building and creative space for all ages

[Woodcraft of Colorado](#)

6770 S Peoria Street, Centennial
303-290-0007

Selected Informational Resources for Model Builders

[Model Ship Builder](#)

This website has a popular forum with over 1900 members and an extensive group of building logs. They also sponsor group builds and provide an opportunity for members to place articles. In addition, archived issues of "Warships and Workboats" and "MSB Journal" can be accessed here.

[Ships of Scale](#)

This website provides a forum and build logs from around the world, though it is an English language site headquartered in the USA. It was never associated with the now-defunct *Ships In Scale* magazine (whose intellectual properties were acquired by the Nautical Research Guild).

[Nautical Research Guild](#)

Official website for this premier ship building organization. There are articles, links, and NRG news.

[Model Ship World](#)

This large comprehensive site is now operated by the Nautical Research Guild. It is a major forum with build logs and plenty of responses to modeler's questions. Also access shop notes, tips, techniques, and research.

[John's Nautical & Boatbuilding Page](#)

This site includes mostly life-size boat building material, but its self-proclaimed "Mother of All Maritime Links" can be helpful.

[Bottled Ship Builder](#)

This is a forum that is all about ships in bottles and miniature buildings. There is a lot of information on the site for anyone interested in ships in bottles and miniatures.

[Model Ship Building Secrets](#)

This is an English blog with a directory, "50 of the Best Model Ship Building Sites".

[DeAgostini Model Space](#)

A British commercial site selling kits and tools with a forum filled with build logs of large models.

[Arsenal Modelist](#)

Olivier Bello's ship modeling site features forty-three short tutorials, closeups of his fine work and building logs.

[Wooden Ship Modeling for Dummies](#) (aka Naval Model Making for Dummies)

The site contains illustrated photos (three thousand) and videos (two hundred). However, unless you pay to subscribe, you may only access a limited amount of this instructional material. Those unrestricted tutorials are certainly worth exploring.



THE NAUTICAL RESEARCH GUILD

"ADVANCING SHIP MODELING THROUGH RESEARCH"

Annual membership includes our world-renowned quarterly magazine, *Nautical Research Journal*, which features photographs and articles on ship model building, naval architecture, merchant and naval ship construction, maritime trade, nautical and maritime history, nautical archaeology and maritime art.

Other benefits include discounts on annual conferences, ship modeling seminars, NRG products and juried model competitions which are offered exclusively to Guild members. We hope you will consider joining our ongoing celebration of model ships and maritime history.

For more information contact us at: www.thenrg.org or call 585 968 8111

