



THE SCUTTLEBUTT

The Scuttlebutt is the official newsletter of the Rocky Mountain Shipwrights.
Its objective is to promote, develop and further scale model shipbuilding,
as well as study maritime subjects, including art, history and traditions.

March 2025

History - From Wisconsin to the End of the World

March Meeting

Shipwrights meet the THIRD Saturday of the month at
Rockler Woodworking and Hardware. The store
opens at 9:00 am and the meeting starts at 9:30.

2553 S. Colorado Blvd. Denver, CO 80222

Next meeting: Mar. 15, 2025

March Presentations

History – Martin Jelsema

Mystery – Hugh Long

Knots – Scott Shilling

Arvada Workshop

The workshop is on the FIRST Saturday of every
month, beginning at 9:00 am at the Arvada City Hall,
Police entrance.

8101 Ralston Road, Arvada, CO 80002

Next workshop: Apr. 5, 2025

Officers

Commodore.....Martin Jelsema

Skipper..... Phil von der Heydt

First Mate..... Jay McKeown

Purser.....Scott Shilling

Clerk.....Doug Graham

Committees

Events Chair: Erik Collett

Photographer: Jay Phillips

Historian: Roger Hanson

Scuttlebutt: Hugh Long

Webmaster: Rob Cuscaden

Workshop Chair: Ralph Buckwalter

Website

<http://rockymountainshipwrights.org>

Cargo Hold

Cargo Hold	1
Skipper's Log.....	2
February 15, 2025 Meeting Notes.....	3
Show & Tell	6
Presentation – Sir Francis Drake's Golden Hind	7
March 1, 2025 Workshop	7
March 15, 2025 Meeting Agenda	9
28 Boats, 28 Days	9
Maritime Museum of Ushuaia	10
Get Your Swag	18
Website Password	18
Sources of Tools, Supplies & Services.....	19
Online Suppliers.....	19

Local Sources	20
Selected Informational Resources for Model Builders	21

Skipper's Log

I want to thank everyone for the inspired discussion at our last meeting and for helping the club to codify who we are and what is important to us.

It appears that what we identified in this exercise was a clear opportunity at the train show to exercise what we are about. For those of you who love to teach history and/or model shipwrighting or just enjoy chatting with folks, the train show is a terrific opportunity to do so.

The train show is a huge display of modeling (trains mostly), but is attended by thousands of people, young and old, who appreciate models. I am hoping that we can get several assorted styles of our modeling for the show. I am also hoping that several members will make the effort to attend. I assure you that you will enjoy your time there. We should have a duty roster available soon for those who wish to staff the booth and hopefully a list of folks who would like to share their models; both finished and in process. We do not need very many members. We only have a small banquet table and a few chairs, but I know that many of you would enjoy the experience. Thanks to Alice for her help in making this happen and her organizational skills.

At the same time as the train show, the April 5th workshop of the Shipwrights will meet as usual at the Arvada police station at the usual time (9 am to around 11:30 am).

We have a great lineup of programs for the March 15th meeting with an interesting history presentation by Ralph and an intriguing mystery presentation by Hugh. Also, Scott will be giving a technical demonstration reminding us of some knot-tying techniques that many of you have used for years and others of us have forgotten or never knew at all. Hope to see you all there in the meantime.

Fair winds and following seas,

Phil von der Heydt, Skipper

817-832-7631

Who are the Rocky Mountain Shipwrights?

A group of ship modelers who gather because:

- We all love our art and enjoy sharing our styles and techniques.
- We welcome experienced modelers and rookies enthusiastically.
- We love teaching all shipwright skills.
- We enjoy sharing building reports and solving troubleshooting problems.
- We are a resource for families who find themselves with a shipwright's bench and models but without its shipwright.
- We serve as a clearing house for books, spare equipment, tools, and construction materials.
- We repair and clean neglected models, so that they can be proudly displayed.
- We enjoy maritime history and teaching others.
- We maintain an extensive modeling library.
- We maintain expensive and specialized equipment for member use.

February 15, 2025 Meeting Notes

Our new Skipper, Phil van der Heydt called the meeting to order at 9:33 am. Members stood at attention and the Skipper led the members in the pledge of allegiance.

- Twenty in attendance: Fred Bell, Ralph Buckwalter, Michael Caramia, Joe Carroll, Ross Clark, Rob Cuscaden, Bob Fivehouse, Doug Graham, Martin Jelsema, Jay McKeown, Russ Murkowski, David Niss, Mark Persichetti, Carol Phillips, Jay Phillips, Robert Rushford, Alice Sampson, Scott Shilling, Martin Ters, and Phil van der Heydt.
 - One new member: David Niss, from Indiana. He fully rigged a model in junior high school, the USS Constitution. He heard about the Shipwrights from the website.



New Member – David Niss



(Left to Right): David, Ross, Robert, Mark, Alice, Doug, Michael, Joe, Jay M, Russ, Ralph, Bob, Martin T, Martin J, Jay P, Phil, and Scott



(Left to Right): Phil, Scott, Martin T, David, Doug, Jay M, Ross, Rob, Russ, Fred, Ralph, Michael, Bob, Mark, Joe, and Robert



(Left to Right): Rob, Robert, Ralph, Ross, Martin J, Scott, and Doug



(Left to Right): Martin T, Ralph, Ross, and Scott



(Left to Right): Scott, Phil, David, Doug, Martin T, Rob, Ross, Jay M, Martin J, Ralph, Robert, Joe, and Bob

Purser's Report – Scott Schilling

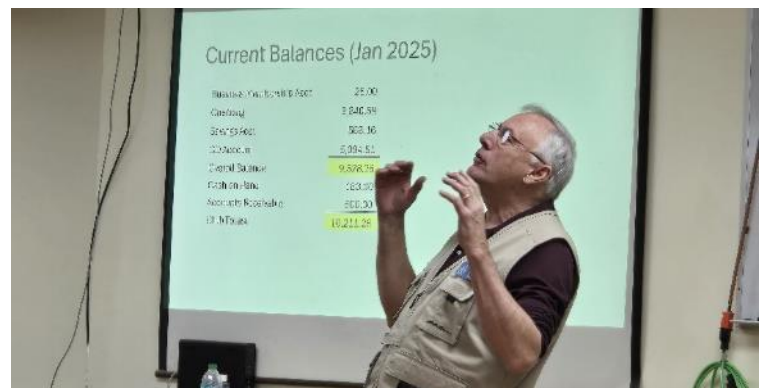
- Once approved, a PowerPoint of the financials will be made available.
 - The club has current cash on hand of \$10,211.26.
 - 2025 Budget was presented but there were enough questions that deferred approval until some questions about expense levels have been addressed.
- Membership status:
 - 63 members
 - 9 Paid for 2025
 - 3 Life members
 - 51 Currently unpaid

Announcements

- None

Old Business

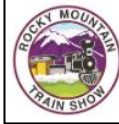
- Purser presented some by-law changes for members to review.



- The motion to raise the per item level of expenditures i) signed solely by the Purser, ii) at the discretion of the Board and iii) at the direction of the Membership was approved.

New Business

- Would anyone like to volunteer to attend the [Rocky Mountain Train Show](#) - Spring 2025
 - April 5th & 6th at the National Western Complex
 - No volunteers
- Should the Scuttlebutt be sent to unpaid members?
 - Motion to send Scuttlebutt to unpaid members made and approved.
- Should members be sent a renewal notice?
 - Motion to send renewal notice to members made and approved.
- How we can improve our public image to show others who, what, and how we do our projects and hobbies.
 - Scuttlebutt header was presented as an example of a mission statement.
 - A proposal to create a handout of some kind was made and approved.
 - Format not finalized; Publicist (Martin Jelsema) will work on design with goal of being ready for train show. Printing costs are in the proposed budget.
 - The mission statement on the Scuttlebutt was previously adapted and will be included in the handout along with bullet points from February 2025's Skipper's Notes.
- Do we want to sell models at cost or charge a stipend on sales?
 - The consensus was that any money taken in from donated models and/or equipment will be based on the relationship with the donator. No club policy should be developed.
- Do we want to try to sell items at all?
 - After discussion, no club policy should be developed.
- Do we want to help repair other people's models?
 - After discussion, no club policy should be developed.
- Do we want to set a price for repairs?
 - After discussion, no club policy should be developed.
- Looking to make bios on members of the club.
 - After discussion, the item was tabled.
- Ed Quam's daughter contacted Ralph B about Ed's uncompleted model of the Flying Fish as she will be going through Ed's storage shed in VA shortly. The assumption is that the missing and related parts of the ship will be found. Currently Jay M has the ship to complete.
 - Motion was called to ship the unfinished model to Bruce Bollenbach in TN to complete the model (the parts from the storage shed will also be going to him). Motion was approved, Ralph Buckwalter to take responsibility.



Rocky Mountain Train Show

- Discussion to participate in model builders show in Manitowoc Wisconsin. Any club member wishing to attend or enter their models into the show should contact Ralph. Ralph will bring any models to the show.
 - Registration for the show is open now through May 1, 2025. Visit their [website](#) for full details, the event schedule, and local hotel room block information. Do not miss out on a great weekend of models and conversation.
 - Also see Manitowoc's 28 Boats, 28 Days Campaign below for another interesting event going on in Manitowoc.



**WISCONSIN
MARITIME
MUSEUM**
AT MANITOWOC

Current Hours Open Thursday - Monday, 10 AM - 4 PM

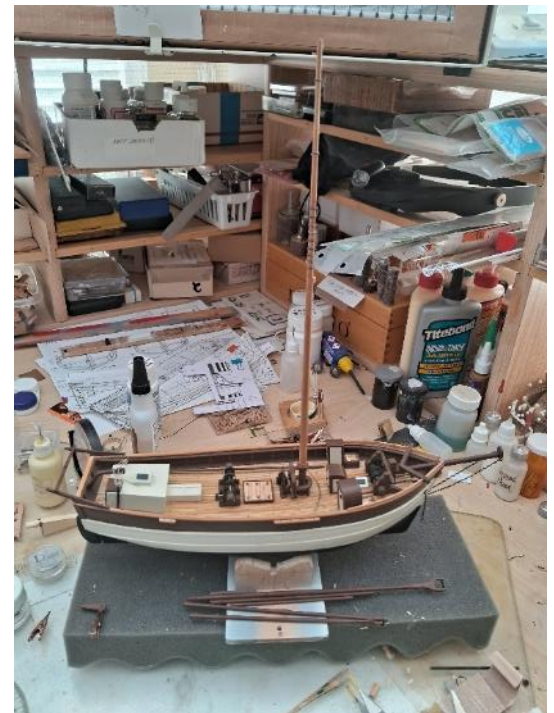
2025 Midwestern Model Ships & Boats Contest




We're excited to announce that the **2025 Model Ships & Boats Contest** will take place **May 16-18, 2025**, and we hope you'll join us! The contest committee has been working hard to make this year's event better than ever, with exciting new additions and improvements.

Show & Tell

Ralph Buckwalter presented his model of the Gjoa, the first ship to go through the northwest passage. Ralph's Gjoa has all the deck furniture including the three windlasses'; the main one is gear driven, and the other 2 are chain driven. He is starting to set the main mast and all the rigging. He hopes to have it ready for the [Manitowoc show](#) in mid-May.



Ralph's so-called "cluttered" home workspace



Martin Jelsema presented his building materials organizer. His container/organizer is for all the wooden strips that tend to be left over from a kit's original materials. He has taken 9 cardboard tubes from aluminum foil rolls and placed them in a 4" diameter mailing tube with the bottom closed. Using the parts lists from various kits, he has labeled each tube, then separated the strips and placed them in the corresponding tube. This keeps him from having to measure strips every time he needs a particular sized strip.

Martin's lumber organizer

Jay McKeown displayed a few models that are/were for sale. They are/were:

- Rhoda Mary - Sold for \$60
- HMS Prince - For sale for \$150
- HMS Endeavour - For sale for \$60
- HMS Neptune - For sale for \$150

If you are interested in any of the remaining models, please contact Jay directly.

Additionally, Martin Ters brought in a partially completed model of the Constellation and gave it away.



Presentation – Sir Francis Drake's Golden Hind

Jay Phillips gave a presentation on Sir Francis Drake's Golden Hind. He showed a [3D recreation of the ship from Animagraffs](#).

The video is a comprehensive tour through the Golden Hind, an early globe-crossing sailing vessel from 1577.

The Golden Hind was not just for exploration, but it was also a pirate ship, sorry privateer since he was authorized by the Queen.



The video was paused as members had questions, wanted to discuss, or add comments.

Meeting adjourned

March 1, 2025 Workshop

Saturday's turnout was busy as there were seventeen members, one possible new member, and one guest in attendance. They were Jim Brooks, Ralph Buckwalter, Erik Collett, Jim Cuscaden, Rob Cuscaden, Terry Duffin, Bob Fivehouse, Doug Graham, Martin Jelsema, Charlie Krinsky, Steve Lofshult, Hugh Long, Del Milne, David Niss, Jay Phillips, Scott Shilling, (and nephew Rhys from the UK), Jack Toll (possible new member), and Phil van der Heydt.



(Left to Right): David N, Martin J, Jim B, and Terry D



(Left to Right): Phil vdH and Charlie K



(Left to Right): Jim C, Rob C, and Steve L



(Left to Right): Hugh L, Bob F, Martin J, and Jim B



(Left to Right): Doug G, Del, David N, Ralph B, Rob C, Jim C, Phil vdH, Bob F, Charlie K, and Erik C



Jack Toll is our potential new member. He recently inherited around 20 completed ship models that his father built or purchased. Emma, a Baltimore Clipper (complete with a keg of Coors beer) and the Galeon San Mateo SLO XVI are shown below. At a minimum they all need cleaning, but most need repairs of one kind or another. Jack intends to do the repairs himself, leaning on advice from club members.



Jack T (EMMA BALTIMORE CLIPPER 1815)



Jack T (GALEON SAN MATEO SLO XVI)



Doug G (TUGBOAT ANTEO)



Charlie K (BALTIMORE CLIPPER)



Bob F (SHOTTON)



Ralph B (GJØA)



Jay P

March 15, 2025 Meeting Agenda

Please join us on Saturday March 15th at Rockler Woodworking and Hardware for our monthly meeting. The store opens at 9:00 am and the meeting starts at 9:30 am. Rockler is located at 2553 S. Colorado Blvd. Denver, Colorado 80222.

- Flag Ceremony
- Skipper's Report
- Purser's Report
- Skipper's Log
- Old Business
- New Business
- Break
- History Presentation (20 minutes) – Martin Jelsema
- Mystery Presentation (20 minutes) – Hugh Long
 - California, Sir Francis Drake, and his brass plate
- Knots Presentation (20 minutes) – Scott Shilling
- Show and Tell
- Adjourn

28 Boats, 28 Days

Throughout February, the Wisconsin Maritime Museum at Manitowoc highlighted a different Manitowoc-built submarine every day on their [Facebook](#) page. While their donation campaign is over, they continue to strive to honor the men and women who built the Manitowoc submarines, as well as the men who bravely served aboard them. The money raised through their campaign supports the dry docking and restoration of the USS Cobia.

The USS Cobia (SS/AGSS-245) is a Gato-class submarine, formerly of the United States Navy, named for the cobia (a species of marine carangiform ray-finned fish). The Cobia was designated a National Historic Landmark for her service in World War II, which included service in the Pacific, where she earned four battle stars.



Maritime Museum of Ushuaia

As I am sure many of you do, when I am in a new place, I look for things to do that are ship or nautical related. During my recent cruise around the southern tip of South America, my head was spinning as everywhere I turned, there seemed to be something.

In Ushuaia (pronounced "oo-SHWAI-ya"), I hit pay dirt. The city, which is known as El Fin del Mundo (The End of the World) is located below the 54th parallel south latitude, making it the world's southernmost city. It was there that I found the [Maritime Museum of Ushuaia](#). While on the [End of the World Train](#) (Tren del Fin del Mundo) excursion just outside of the city, the audio guide mentioned that there was a nearby prison museum in town that also housed a maritime museum and knew I had to check it out.



Given all the maritime history in this part of the world, I assumed it would be GOOD.

A quick online search that included a [brief video introduction](#) and I was hooked. It did have a fairly steep price of \$30,000 Argentine pesos (around \$30 US) but your admission was good for two days. Once there I found that in addition to almost everything having written descriptions in both Spanish and English, there is a [free self-guided audio tour](#) accessible through your smart phone in six different languages that adds even more detail. And it was all within walking distance of the pier.

At first, I started counting the number of models, but very quickly I lost count. At the end I estimated that there were at least 150 models that included a few submarines, a number of planes, a handful of dioramas, and of course an overabundance of ships. So many models that towards the end of the day (I spent over 3 hours there), I was overwhelmed to the point of exhaustion. Unfortunately, our ship was scheduled to depart that night, or I would have definitely spent even more time there or used the "free" second day that is included in your admission.

Before getting to the models, I would be remorseful if I did not tell you a little more about Ushuaia. It was founded in 1884, and shortly later the Argentine government decided to use prison labor to build a prison which would increase the area's population and help ensure Argentina's sovereignty over Tierra del Fuego. In 1896, the prison received its first inmates. In addition to those who built the prison, the inmates were mainly re-offenders, those considered too dangerous for other prisons, and political prisoners.



Escaping from Tierra del Fuego was difficult, not just because of how isolated the area was, but also because of the extreme weather conditions. The harsh weather also made food scarce. The few prisoners that managed to escape into the surrounding area, returned hungry or cold on their own within a few weeks or were found dead. There are no reported successful escapes.

The inmates became forced colonists and spent much of their time building the town with timber cut from the

forest around the prison. They also built a railway to the settlement, part of which is the previously mentioned End of the World train. This railway is the southernmost railway in the world.

The prison operated until 1947 when it was closed in response to the many reports of abuse and unsafe practices. The prison then sat empty for years, abandoned, as a naval base grew around it. In 1994, the prison was converted into a museum and opened its doors a year later in 1995.

At the beginning, it only housed a private collection of ship models, engravings, and old maps related to regional history.

Today the museum has grown into four museums in one, with a fifth museum under construction. In addition to a full wing being dedicated to



the history of the prison, the museum touches on everything related to the history of Tierra del Fuego from the point of view of the man of the sea.

The modelers include: Ing. Mirón Gonik, Gerardo Ghiringhelli, Carlos Casella, Manfredi Tramonti, Diego Florit, Daniel Mosquera, Gustavo Schmidt (ships in bottles), Horacio Rodriguez (miniatures), Manuel Abella, Harvey Bonin, María de los Ángeles Martínez, Federico Escusol Galiana and Mario Luis Rivero.

All the models are in glass or plastic cases, so please forgive the reflections in my pictures, and for the sheer volume. I took almost 450 pictures, so cutting it down the “few” below was an exercise.

Now onto the models of the Maritime Museum of Ushuaia.



Museum Guard



Cutter Tomasito



Pirates & Corsairs



Canonera (gunboat) Parana 1873



Canonera (corvette or small warship) ARA



Cutter Tomasito - Goleta La Blanca - Cutter Garibaldi



Passenger ship Monte Cervantes wreck 1930



Typical prison cell



Model made by prison inmate



Borchgrevink's cabin at Camp Ridley



Endurance & the James Caird



James Caird



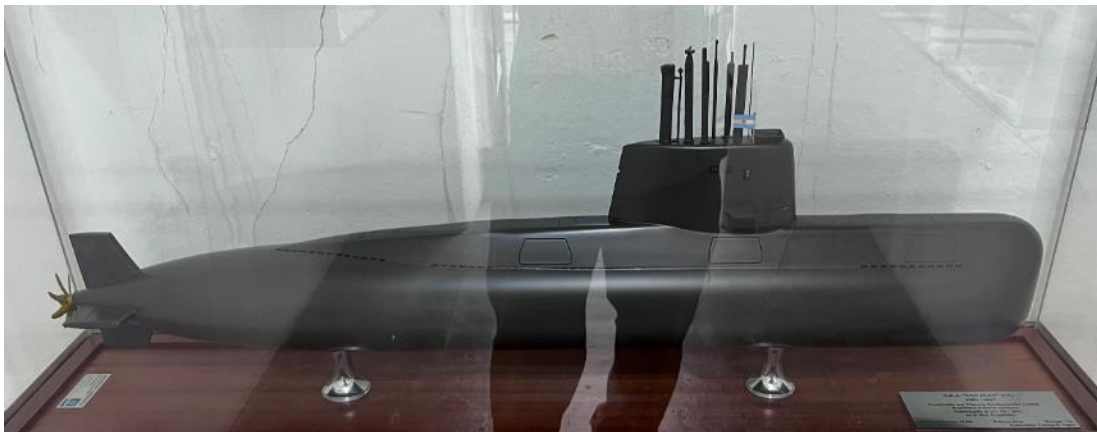
Prison Trains



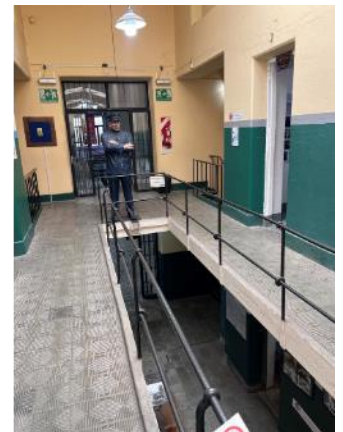
Scotia from Bruce's 1902 expedition



Cargo/Passenger ship Monte Cervantes 1930



ARA San Juan S-42



Cell Block Guard



Douglas DC-3 1962 CTA-15



Heinkel HD-24 "Tsingtau" seaplane - the Silver Condor



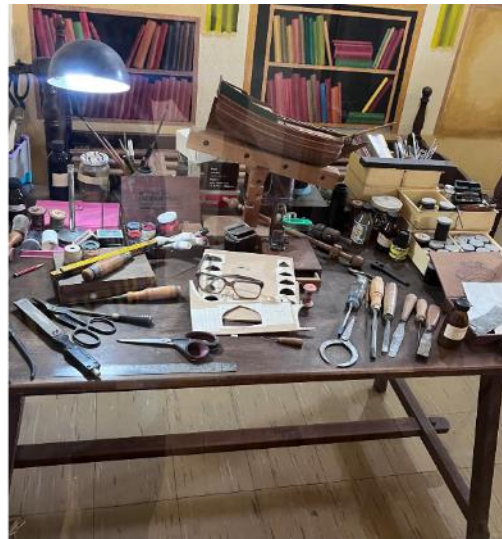
Artic Sled



Familia Bridges' Lela



Hugh & Inmate



Miron Gonik's actual workshop



Evolution of local watercrafts



Brig Jane & Cutter Beaufoy of London



Cutter Tomasito in a bottle



Frigate ARA Libertad



Brig/Schooner Espora in a bottle



Life in Tierra del Fuego



Life in Tierra del Fuego



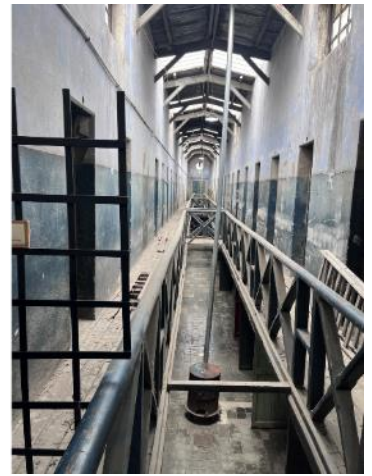
Schooner Nuestra



Boeing Stearman 1-E-41



Yaghan Canoe



Empty Cellblock



Mussel Fishing



Mar del Plata Fishing Boat



Life On Board Punishments



Indigenous People of Tierra
Del Fuego



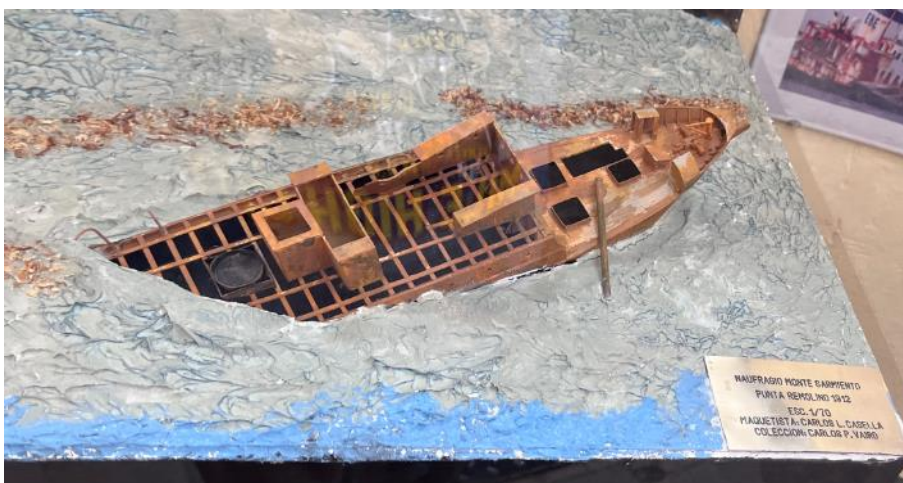
Evolution of the Dalca (a light sewn boat)



Frigate Sarmiento



Swedish steamship Antarctic



Containership Monte Sarmiento wreck



Frigate Interior



Ship Beam



HMS Adventure



Coast Guard PNA-GC 71 Mar Del Plata



Naval Cannons



HMS Beagle

If you have visited a maritime museum or some other place that you think our members would like to know about, please contact me (Hugh) and we will get it teed up for a future issue.

Get Your Swag

- For polo shirts, caps, and vests, ask **Scott Shilling** at any meeting.
- For name badges, ask **Rob Cuscaden** at any meeting.



Website Password

Club members have access to the archive of the Scuttlebutt on the website. This portion of the [website](#) is locked to members only. If you cannot access them, please let me know and I will get you your password.

Sources of Tools, Supplies & Services

Rocky Mountain Shipwrights is not affiliated with any of the companies in the lists below (other than the fact that we meet on the **3rd Saturday of each month at Rockler**).

The first list is of selected on-line suppliers. The second list is of local suppliers of goods and services that could be of value to ship modelers. And the third list is of additional resources. **Think of these lists as incomplete.** If you use or have discovered others, please email them to hlong222@comcast.net and they will be added to the lists. With your contributions, we can make these lists a more comprehensive and valuable resource.

Online Suppliers

Nautical Hobby Shops

[Ages of Sail](#)

Kits, parts, plans, supplies, and tools.

[Blue Jacket Shipcrafters](#)

Kits, parts, plans, supplies, and tools.

[Cast Your Anchor](#)

Kits, supplies, and tools; based in Canada so shipping is a little longer.

[Model Expo](#)

Nautical hobby shop, extensive ship kits, parts, tools, and supplies

[Modelers Central](#)

Kits, supplies, plans, and tools

[Seaworthy Small Ships](#)

Kits are geared towards new and younger modelers.

[Syren Ship Model Fittings and Supplies](#)

Ship model kits, parts, and scale fittings.

[Wooden Model Ship Kit](#)

Ship model kits, parts, and scale fittings.

Tools

[Byrnes Model Machines](#)

Top of the Line micro saws, sanders, and other tools

[Contenti Jewelry Supply](#)

Jewelry tools, fair prices on hand tools, cheap and quality versions of most tools.

[MicroMark](#)

Small tool specialist; a small selection of ship kits, and ship modelling supplies.

[UMM-USA](#)

Modeling tools for plastic and wood models

[Razor Blade Company](#)

Cutting blades and handles

Materials

[Cards of Wood](#)

Thin veneer and plywood

[Constantines's Wood Center](#)

Wood veneers plus Rockler-like tools and supplies.

[National Balsa](#)

Wood supplier, airplane centric but good stock of dimensional strips, sheets, and substantial number of blocks in different types of wood. It may have a \$50 minimum order.

[Northeastern Scale Lumber](#)

Wood and fabricated wood for models, doll houses and railroad layouts

[Saunders Midwest Products](#)

Balsa, basswood and more – strips, sheets, and dowels. Also, beginner boat kits

Parts

[Flags of the World](#)

Info about all types of flags but not a source of nautical modeling flags

[J.T. Sitek Props](#)

Scale model ships propellers.

Graphics

[Shapeways](#)

3d printing company with parts for units ranging from complete ships to figureheads. Also does custom work.

Local Sources

[ABC Imaging](#)

77 Klamath St. Denver
303-573-5757
Large & small format copying, B&W printing

[Art Parts Creative Resource Center](#)

3080 Valmont Road, Boulder
720-379-5328
Contributed used arts stuff you get for cheap, from chalk to sewing machines, and more.

[Austin Hardwoods of Denver](#)

975 W Mississippi Ave, Denver
303-733-1292

Colpar/Hobbytown – two locations

[Aurora Location](#)

1915 S Havana St, Aurora, CO
303-341-0414

[Lakewood Location](#)

3355 S Wadsworth Blvd, Lakewood, CO
303-988-5157
These are good local hobby shops that have a selection of wood ship kits, supplies, and tools.

[Guirys](#)

Multiple locations
303-412-6522
Art supplies and house paints

[Hobby Lobby](#)

Multiple locations
Arts and craft supplies

[Laird Plastics](#)

10004 E 45th Ave, Denver, CO
866-292-9090
For plastic case covers ask for Tom

[Meininger Art Supply](#)

499 Broadway, Denver
303-698-3838
Paints, brushes, tools, paper, and more

[Michael's](#)

Multiple locations
Arts and crafts supplies

[Plasticare](#)

4211 S Natches Ct Suite K, Englewood, CO
303-781-1171
Plastic supplier/resin with customer shop. can do acrylic fabrication & laser engraving.

[Reynolds Advanced Materials](#)

3920 Grape Street, Denver
303-399-0202
Clays, resins, silicone, and more

[Rocky Mountain Train Supply](#)

6060A W 55th Ave, Arvada, CO
303-456-6702
Only model-train store in Denver, broad selection of supplies, strip wood, details, scenic supplies.

[Rockler Woodworking and Hardware](#)

2553 S Colorado Blvd, Denver, CO
303-782-0588
Home base for wood, tools, and supplies

[Thinker Tinker Workshop](#)

3735 Ames St. Wheat Ridge, CO 80212
303-748-9180
A building and creative space for all ages

[Woodcraft of Colorado](#)

6770 S Peoria Street, Centennial
303-290-0007

Selected Informational Resources for Model Builders

[Model Ship Builder](#)

This website has a popular forum with over 1900 members and an extensive group of building logs. They also sponsor group builds and provide an opportunity for members to place articles. The site also has archived issues of "Warships and Workboats" and "MSB Journal."

[Ships of Scale](#)

This website provides a forum and build logs from around the world, though it is an English language site headquartered in the USA. It was never associated with the now-defunct *Ships In Scale* magazine; those are the intellectual property of the Nautical Research Guild.

[Nautical Research Guild](#)

Official website for this premier ship building organization. There are articles, links, and NRG news.

[Model Ship World](#)

The Nautical Research Guild operates this large comprehensive site. It is a major forum with build logs and responses to modeler's questions. Also access shop notes, tips, techniques, and research.

[John's Nautical & Boatbuilding Page](#)

This site includes mostly life-size boat building material, but its self-proclaimed "Mother of All Maritime Links" can be helpful.

[Bottled Ship Builder](#)

This is a forum that is all about ships in bottles and miniature buildings. Information for anyone interested in ships in bottles and miniatures.

[Model Ship Building Secrets](#)

This is an English blog with a directory, "50 of the Best Model Ship Building Sites".

[DeAgostini Model Space](#)

A British commercial site selling kits and tools with a forum filled with build logs of large models.

[Arsenal Modelist](#)

Olivier Bello's ship modeling site features forty-three short tutorials, closeups of his fine work and building logs.

[Wooden Ship Modeling for Dummies](#) (aka Naval Model Making for Dummies)

The site contains illustrated photos (three thousand) and videos (two hundred). However, unless you pay to subscribe, you may only access a limited amount of this instructional material. Those unrestricted tutorials are certainly worth exploring.



THE NAUTICAL RESEARCH GUILD

"ADVANCING SHIP MODELING THROUGH RESEARCH"

Annual membership includes our world-renowned quarterly magazine, *Nautical Research Journal*, which features photographs and articles on ship model building, naval architecture, merchant and naval ship construction, maritime trade, nautical and maritime history, nautical archaeology and maritime art.

Other benefits include discounts on annual conferences, ship modeling seminars, NRG products and juried model competitions which are offered exclusively to Guild members. We hope you will consider joining our ongoing celebration of model ships and maritime history.

For more information contact us at: www.thenrg.org or call 585 968 8111

