



# THE SCUTTLEBUTT

The Scuttlebutt is the official newsletter of the Rocky Mountain Shipwrights. Its objective is to promote, develop and further scale model shipbuilding, as well as study maritime subjects, including art, history and traditions.

February 2023

## We Love Ship Modeling!

### Meeting Information:

Shipwrights meet the THIRD Saturday of every month at Rockler Woodworking and Hardware, 2553 S. Colorado Blvd. Denver. Store opens at 9:00 am and meeting starts at 9:30.

### The Next Meeting Will Take Place on February 18, 2023

Jon Sorensen will speak about modeling masts and spars

---

### And remember our Arvada workshop.

It is held at the Arvada City Hall, Police entrance.  
The address: 8101 Ralston Road.

This workshop is scheduled for the FIRST Saturday of every month beginning at 9:00 am

**Next workshop: March 4, 2023**

### Officers:

Commodore.....Alice Sampson  
Skipper.....Bob Fivehouse  
First Mate.....Ralph Buckwalter  
Purser.....Steve Lofshult  
Clerk.....Jim Cuscaden

### Committees:

#### Library

Bob Bunch

#### RMS History

Roger Hanson

#### Mentoring Program

Ralph Buckwalter

#### Communications

Martin Jelsema (Scuttlebutt & Website)

### Website:

<http://rockymountainshipwrights.org>



## Skipper's Log

Aloha, I'm writing to you from sunny Lookout Mountain, garden spot of Golden!

There was a good turnout for the workshop; happy to see people working on models! Does my heart good to see people work.

We (your officers) are planning an auction for May. This is not a silent auction such as we have for the October show but a real knock-down sell-it-at-all-costs auction. You can bring in anything you want to get rid of that relates to ship modeling. Plans, kits, wood, tools, books and anything that you may wish to unload from your collection of materials and "stuff" is welcome. Hopefully, it will be fun and profitable to all involved. I know you have junk that is just taking up room so consider bringing it and getting some of your money back. A future Scuttlebutt will have more information but for now, just think about all the cleaning you can do around your workspace!

Happy modeling!

Bob Fivehouse, Skipper

## Minutes of the January, 2023 Meeting

The meeting was brought to order by our new Skipper, Bob Fivehouse, at 9.30 am. The members stood to attention and recited the Pledge of Allegiance.

Eighteen (18) members were in attendance including two new members:

- Jim Morravic, phone 720 879 7059, email [n0cot@yahoo.com](mailto:n0cot@yahoo.com). He is currently building an Artesania kit frigate (see below). He has had problems planking his boat with kit supplied wood.
- Lewis Kilbourn, phone 303 985 0768, email [lekilbourn5912@gmail.com](mailto:lekilbourn5912@gmail.com). He has his own Micromart saw and has cut his own planking for his Revel model tug.

The new member's concerns about planking wood led to a general discussion of the subject. As a result of recent model shop closures, supplies are limited. Ralph Buckwalter mentioned that he has gathered a considerable stock from past member donations. Members are welcome to check this stock. Further, members can explore the Lumberyard website. Bob Fivehouse brought up that members can also view the website maintained by Cards of Wood; they sell very thin wood veneers.

Club members offered condolences to John Sorensen, who has recently lost his wife.

**Finances:** Steve Lofshult disclosed that the Club's 2022 income was \$1077 and expenses were \$1298; The latter included the \$500 spent for modelling tools. The December earned income rebounded to \$0.24. Steve requested that members forward their dues remittances.

### Old Business

New club hats are available at \$10 each; No other old business items were identified.

### New Business

Coffee and donuts – Steve Lofshult has volunteered to procure these valuable items for future meetings.

## Show & Tell

**Jeff Potter** currently building this Mantua model cannon station that is representative of those employed on a Royal Navy fifth rate frigate of the 1850's. He also showed figurines that he is painting with a lacquer base paint and an acrylic finishing coat.

**Ralph Buckwalter** displayed his new model of a Civil War blockade runner; the actual ship was built in Scotland and employed paddle wheel propulsion. He is using the plans that are stored in the club's storage cabinets, employing bread & butter construction techniques and building the hull in two halves.

**Bob Fivehouse** brought in a miniature (1"=50') White Star freighter/liner, the Medic. The original was built in 1899 specifically for the England to Australia trade. The model is less than a foot long.

**John Sorensen** presented a miniature clipper ship in a bottle; The model was made by a German POW using hand made tools. He also displayed a ship's helm that was constructed of brass and wood, built in pieces and put together in a square bottle.

**Martin Jelsema** displayed his progress with the group build ship. He thought the kit supplied wood for planking was too thick and he resorted to a veneer wood. However, he has not achieved alignment between planks and will use the thicker wood and use filler to finish the hull.

## Presentation

Ralph Buckwalter dug into our archive to present photos of the exhibit we conducted at the beginning of this century. The idea was to inspire current members to achieve similar standards of craftsmanship. In addition, he presented a list of potential topics for 2023 presentations and urged members to volunteer to choose from the list, or come up with a different appropriate subject to present.

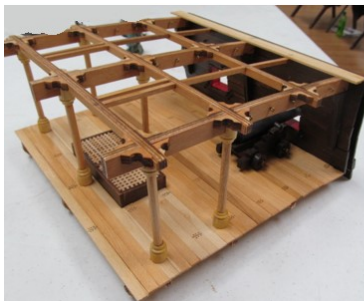
Respectfully submitted, Jim Cuscaden, Clerk



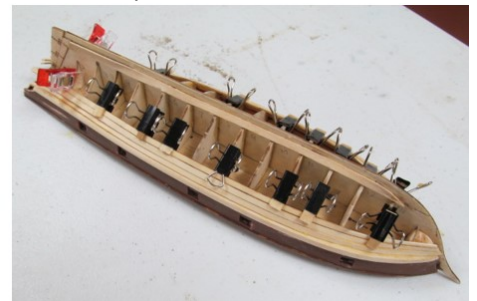
Bob Fivehouse built the miniature, Medic



Jon Sorensen's wheel-in-a-bottle and a vintage prisoner-built ship in a bottle

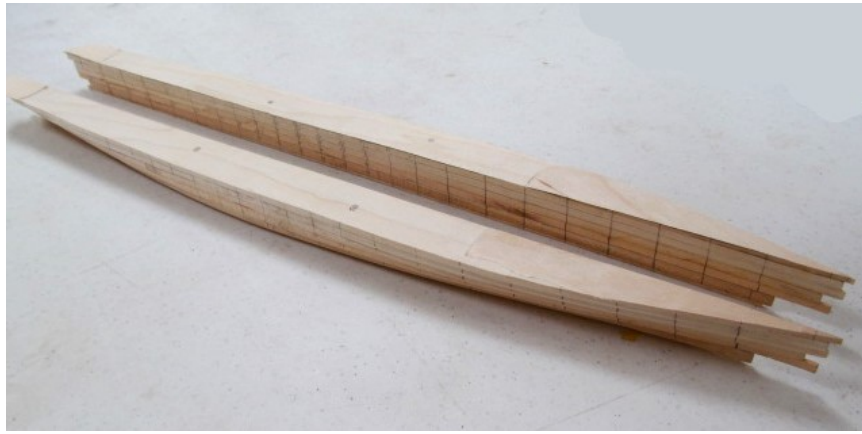


Jeff Potter's gun station and his war games figures



Martin Jelsema's group build

(continued on pg 4)



The split hull of Ralph Buckwalter's blockade runner.

## It's Dues-Paying Time

Yes, it is that time again. They're still just \$12.00. Your Purser, Steve Lofshult, can take your payment at a meeting or a workshop. (Try to pay with small bills) You may also mail him a check, made out to Rocky Mountain Shipwrights, at Steve Lofshult, 4025 D, W.104<sup>th</sup> Drive, Westminster, CO 80401.

## Pick a Presentation to Give This Year

Your First Mate, Ralph Buckwalter, has compiled a list of possible topics for our monthly presentations. It is not all-inclusive, which means if you have an idea you would like to present, by all means schedule it with Ralph. But please look over the list below and perhaps find a topic you would like to explore. Making a presentation is a great way to research a particular topic you would like to know more about. And remember, all the guys who will hear your talk are on your side! Please volunteer by telling Ralph the subject you want to present.

## Proposed Presentation Topics

- |  |   |
|--|---|
| 1 Background research for models, library sources  | 8 Rigging, knots, scale rope sizing, seizing        |
| 2 Hulls, bread and butter, plank on frame,         | 9 Standing rigging, deadeyes hearts, ratlines       |
| 3 Model table saw use                              | 10 Running rigging, blocks, belaying pins and rails |
| 4 Hull planking, spilling,                         | 11 Sails and sail making                            |
| 5 Deck planking. lengths, spacing, trenals         | 12 Painting, finishing                              |
| 6 Bulwarks, deck furniture, companionways, hatches | 13 Casting resins, metals                           |
| 7 Lathe use, masts and yards                       | 14 Bases, cases, mounting                           |

## Get Your Gear Here

- For polo shirts and vests, ask Steve Lofshult at the next meeting.
- For caps, ask John Lamb at the next meeting. (They are back in stock)
- For name badges, ask Rob Cuscaden at the next meeting.

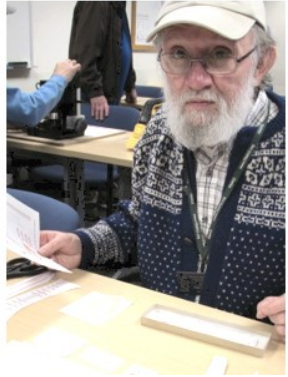


## February Workshop

Workshop attendance is looking up! There were twelve members and a guest attending, including our newest member, Sylas Broeder, Gary Broeder's grandson. Unfortunately, Gary and Sylas had to leave before your editor got their pics.



Ralph Buckwalter



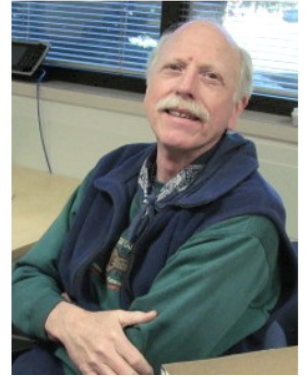
Jay Phillips



Tim Brown



Bob Fivehouse



Steve Lofshult



Charlie Krinsky



Martin Jelsema



Don Griesing

Jeff Potter



Ross Clark

## Has Anyone Seen Ken Cook's Tugboat, Hoga?

At the October exhibit, Ken Cook had a kit of a model of the tugboat Hoga for sale. Apparently, it did not sell, but he had forgotten to pick it up at the show's closing. Does anyone know if it had been "salvaged" after the show? Might you know where it is? If so, please contact Ken at 303-588-3227

## Who Volunteered to Repair Terry's Model?

A month or so Terry Fabricius appealed to us for someone to repair a model, and one of us contacted her. She was going to visit Denver with the model but she lost our member's name and contact info. If it was you, please call her at 303-323-5970.

## Your Editor Has a New eMail Address

Because of "computer problems", your editor has had to change his primary email address. The new address is: [martinjelsema@gmail.com](mailto:martinjelsema@gmail.com). Please make a note of it on your roster.

## Your Editor Made a Mistake

In the January Scuttlebutt, the December meeting show and tell had a slow-drill kit attributed to Ken Cook. But Ken told us he was not even at the meeting! Sorry, Ken. Anyone know who contributed that slow-drill to show and tell?

## Identify Your Favorite Local Resources

At a recent meeting, someone thought it would be great to have a list of local resources published in the Scuttlebutt. So here's an appeal to members to provide your editor the names, phones, addresses and emails of resources you've discovered that have helped you in your modeling. We're looking for wood suppliers, case fabricators, large-size copiers, and any others you have used and can recommend.. You can email this information to your editor, or give him your list at an upcoming meeting or workshop. The email is: [martinjelsema@gmail.com](mailto:martinjelsema@gmail.com) .

## What You Need to Know About Manitowoc

Ralph Buckwalter provided this flyer about the annual modeling contest and exhibit in Manitowoc. It's a show Ralph attends regularly and comes away with at least one award for his models.

He encourages our members to enter models in the contest and participate in the activities. If you are interested, talk to Ralph about the experience . And in the meantime get more information here: [Wisconsin Maritime Museum](#)

# 2023 Midwestern Model Ships & Boats Contest

Save the date! The Midwestern Model Ships & Boats Contest will be held at the Wisconsin Maritime Museum on May 19-21, 2023.

More details will be released in the coming weeks.

Important dates to for your calendar:

**January 31** - Online/Mail-in Registration Open

**May 1** - Closing Date for Registration

**May 19-21** - Contest takes place at the Museum

## Variations on the Clothes Pin Theme – Part 2

In last month's Scuttlebutt we featured a photo of your editor's clothespin clamps and said there were many variations besides those in the photo. Well, our Tennessee member in good standing, Bruce Bollenbach, was inspired to send us photos to prove that point.



Here's Bruce's explanations: "Here are photos (the first two on the top) of some precision model makers clamps that Derf carved and painted to make them more visible on the workbench as he was constantly misplacing them."

Bruce wrote that the third photo was, ... "a couple close pin clamps that Bob Gunnerson made. I've used them countless times in hard to clamp situations."



Bruce's comment about the last photo was "Missing a long 24 pounder from the kit Derf fabricated another. :)" Your editor has no idea what that means or how that tool would work, nor for what purpose. But it does prove the point.

## A Safe Way to Transport a Model Ship

Bruce Bollenbach also contributed this article about packaging a ship for transporting. He should know how because he moved a dozen or so models when he moved to Tennessee. Here's his description:

"Here's a method of transporting a ship model that has worked well for me. I've mounted this model on a black foamcore base. I then cut a cardboard box to the same size as the base and a couple inches higher than the mast. The model and base are then put into the box and two strips of cardboard glued to the inside of the box to prevent the ship from tilting or moving. I then wrap the box in clear cling wrap to let people see inside to keep them from stacking anything on top, and to prevent small objects from falling into the box



## Latest Issue of The MSB Journal Is Now Available

This Internet magazine has renewed publication after a couple of years laying dormant. This issue is 64 pdf pages and can be downloaded at [https://shipsofscale.com/sosforums/msb-journal/msbj\\_2023-02.pdf](https://shipsofscale.com/sosforums/msb-journal/msbj_2023-02.pdf). It has a comprehensive article on using a miniature mill and its accessories, and another on planking hulls.

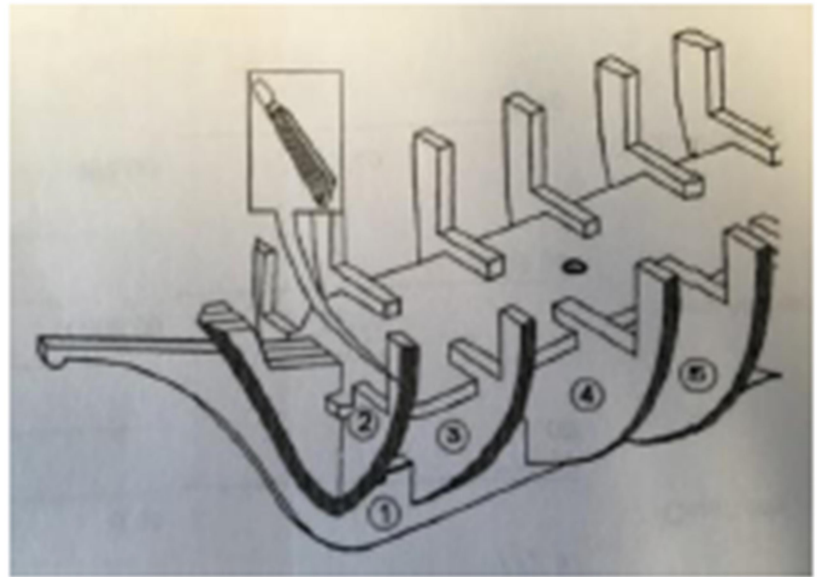
## An Article About Fairing a Hull's Frames

The following tip appeared in the Bluejacket Shipcrafters newsletter and came originally from the Redwood Empire Model Shipwrights.

Using a file, fine rasp or coarse sandpaper on a wooden block, or a combination of all of these, bevel the edges of the frames so that the planks will come in contact with a full thickness of each frame - not just a sharp leading or trailing edge. While the midships frames will require little adjustment, those toward the bow and stern will require more. A piece of broomstick with sandpaper glued to it will make it easier to shape those frames with a hollow curve.

Use a plank and lay it over the frames in various positions to check the bevel (i.e. the plank should touch the full face of each frame as it is bent around them.) If you do have a hollow spot on one (or more) frames(s) it can be built up using slivers of timber.

The whole process of leveling and checking is known as fairing and is extremely important to ensure that when planked, the hull is free of bumps and hollows. Please take your time and resist the temptation to start planking before the hull is satisfactorily faired.



Check again. It cannot be emphasized too strongly that the fairing process described above is the single most important step in building a model ship of which you'll be proud.



### THE NAUTICAL RESEARCH GUILD

"ADVANCING SHIP MODELING THROUGH RESEARCH"

Annual membership includes our world-renowned quarterly magazine, Nautical Research Journal, which features photographs and articles on ship model building, naval architecture, merchant and naval ship construction, maritime trade, nautical and maritime history, nautical archaeology and maritime art.

Other benefits include discounts on annual conferences, ship modeling seminars, NRG products and juried model competitions which are offered exclusively to Guild members. We hope you will consider joining our ongoing celebration of model ships and maritime history.

For more information contact us at: [www.thenrg.org](http://www.thenrg.org) or call 585 968 8111





## Selected Internet Resources for Model Builders

### **Modelshipbuilder.com**

This website has a popular forum with over 1900 members and an extensive group of building logs. They also sponsor group builds and provide an opportunity for members to place articles. In addition archived issues of "Warships and Workboats" and "MSB Journal" can be accessed here. [www.modelshipbuilder.com/](http://www.modelshipbuilder.com/).

### **Ships of Scale**

This website provides a forum and build logs from around the world, though it is an English language site headquartered in the USA. It was never associated with now-defuncted *Ships In Scale* magazine (whose intellectual properties were acquired by the Nautical Research Guild). <https://shipsofscale.com/sosforums/>

### **Nautical Research Guild**

Official website for this premier ship building organization. There are articles, links, and NRG news. <http://www.thenrg.org/>

### **NRG's Model Ship World**

This large, comprehensive site is now operated by the Nautical Research Guild. It's a major forum w build logs and plenty of response to modeler's questions. Also access shop notes, tips, techniques and research. <https://modelshipworld.com>

**FAQ for Ship Model Builders** (by John Kropf) This is a model ship building site which answers all sorts of questions about ship modeling. Many of the links do not work. <http://sites.google.com/site/shipwrightsfaq/>

**John's Nautical & Boatbuilding Page** This site includes mostly life-size boat building material, but its self-proclaimed "Mother of All Maritime Links" can be helpful. <http://www.boat-links.com/>

**Bottled Ship Builder** This is a forum that is all about ship in bottle and miniature building. there's a lot of information on the site for any one interested in ships in bottles and miniatures <http://Bottledshipbuilder.com>

**Model Ship Building Secrets** This is an English blog with a directory , "50 of the Best Model Ship Building Sites"  
<http://www.modelshipbuildingsecrets.com/resources.html>

**Modeler's Central** – An Australian commercial site that features a blog with many modeling tips as well.  
<https://www.modelerscentral.com/>

**DeAgostini Model Space** A British commercial site selling kits and tools with a forum filled with build logs of large models  
<http://forum.us.model-space.com/>

**Arsenal Modelist** – Olivier Bello's ship modeling site featuring 43 short tutorials, closeups of his fine work and a building log.  
<http://www.arsenal-modelist.com/index.php?page=accueil>

**Wooden Ship Modeling for Dummies (aka Naval Model Making for Dummies)** contains illustrated photos (3000) and videos (200). However, unless you pay to subscribe, you may only access a limited amount of this instructional material. Those unrestricted tutorials are certainly worth exploring. <https://shipmodeling.ca>